



2026 NEW STYLES



**momentec**  
**Brands™**



**ROWHOUSE**  
COLLECTION

PG. 14

*outfitting moments*



**ON THE RISE**  
COLLECTION

PG. 4



**SETTER SERIES**  
VOLLEYBALL

PG. 10



**CLUTCH BASKETBALL**  
SUBLIMATION

PG. 42

# Momentec Brands™

## WELCOME TO VERSATILE OUTFITTING, **PERFECTED.**

Built for performance across every environment and occasion, these new styles offer unmatched versatility.

From in-stock options to Momentec Sublimation, each delivers industry-leading outfitting solutions.

Discover what's new for 2026.



# ments that matter



**ALUMNI**  
COLLECTION  
PG. 28



**CITY SERIES**  
COLLECTION  
PG. 18



**WEEKENDER**  
HEADWEAR  
PG. 39



**425100**  
**225100Y**  
**438000**  
 On The Rise  
 Tee



**425500**  
**225300Y**  
 On The Rise  
 Long Sleeve Tee



**710100**  
**230100**  
**710200**  
 On The Rise  
 Shorts



**725900**  
**225900**  
**726000**  
 On The Rise  
 Shorts With  
 Pockets



**795000**  
**295000**  
 On The Rise  
 Two-Button  
 Baseball Jersey



**495100**  
**295100**  
 Ladies On The  
 Rise Sleeveless  
 Jersey



**BADGER**  
SPORT

**Alleson**  
ATHLETIC

**ONE TEAM. ONE LOOK.  
RISE TO NEW HEIGHTS.**

From uniforms to sideline layers, **On The Rise** delivers a complete collection built to unify your look wherever the game takes you



**335000**  
**235000**  
**335100**

On The Rise  
Polo



**426500**  
**226500**  
**426600**

On The Rise  
1/4 Zip Pullover



**857000**  
**255700**  
**428200**

On The Rise  
Basketball  
Jersey



**725200**  
**225200**  
**428800**

On The Rise  
Basketball  
Shorts



**772500**  
**272500**  
**792500**

On The Rise  
Warm-Up  
Jacket



**772600**  
**272600**  
**792600**

On The Rise  
Warm-Up  
Pant



255700

225200

PLAY FAST.  
PLAY TOGETHER.  
**RISE TO THE  
MOMENT.**



ON THE RISE BASKETBALL JERSEY

- 857000** Adult S-3XL MSRP 12.00
- 255700** Youth XS-XL MSRP 12.00
- 428200** Ladies XS-2XL MSRP 12.00



- 100% polyester performance fabric
- Ladies' fit on style 428200
- Crew neck
- Racerback styling on Ladies



ON THE RISE BASKETBALL SHORTS

- 725200** Adult S-3XL MSRP 12.00
- 225200** Youth XS-XL MSRP 12.00
- 428800** Ladies XS-2XL MSRP 12.00



- 100% polyester performance fabric
- Ladies' fit on style 428800
- Covered elastic waistband with inside drawcord
- 6-inch inseam
- Youth inseam graded
- 5-inch inseam on Ladies



BLACK/WHITE F254    BURNT ORANGE/WHITE F268    COLUMBIA BLUE/WHITE F250    FOREST/WHITE F247    GRAPHITE/WHITE F213    KELLY/WHITE F248



MAROON/WHITE F242    NAVY/WHITE F252    PURPLE/WHITE F253    RED/WHITE F245    ROYAL/WHITE F251    WHITE/BLACK F261



772500

792600



772600

792600



**ON THE RISE WARM-UP JACKET**

<b>772500</b>	Adult	S-4XL	MSRP 37.00
<b>272500</b>	Youth	XS-XL	MSRP 37.00
<b>792500</b>	Ladies	XS-3XL	MSRP 37.00



- 100% polyester double-knit
- Ladies' fit on style 792500
- Heat sealed label
- Self-fabric collar
- Sport paneled shoulder for maximum movement
- Front zippered pockets
- Open bottom
- Dropped tail hem

**ON THE RISE WARM-UP PANT**

<b>772600</b>	Adult	S-4XL	MSRP 37.00
<b>272600</b>	Youth	XS-XL	MSRP 37.00
<b>792600</b>	Ladies	XS-3XL	MSRP 37.00



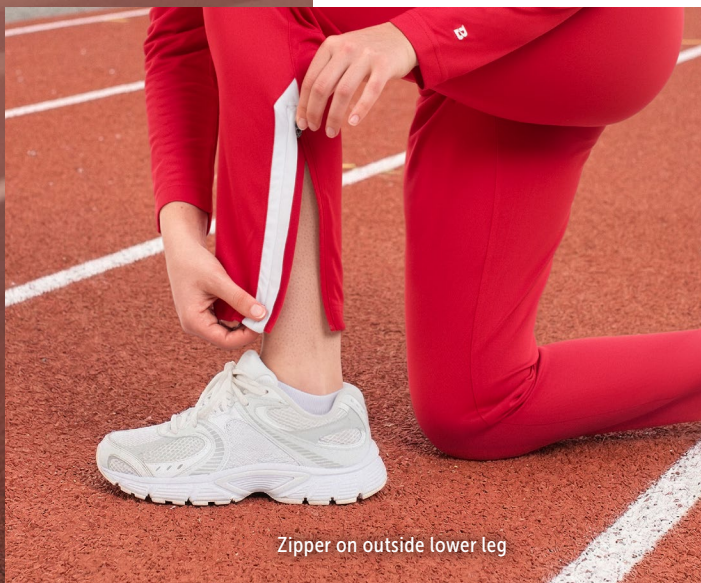
- 100% polyester double-knit
- Ladies' fit on style 792600
- Heat sealed label
- Covered elastic waistband
- Side seam pockets
- Tapered leg



BLACK/WHITE F254    BURNT ORANGE/WHITE F268    COLUMBIA BLUE/WHITE F250    FOREST/WHITE F247    GRAPHITE/WHITE F213    KELLY/WHITE F248



MAROON/WHITE F242    NAVY/WHITE F252    PURPLE/WHITE F253    RED/WHITE F245    ROYAL/WHITE F251



Zipper on outside lower leg



LADIES SETTER SERIES  
SLEEVELESS VOLLEYBALL JERSEY

**A23003** Ladies S-2XL MSRP 16.00  
**A24003** Girls XS-XL MSRP 16.00



- 87% polyester/13% spandex flat knit
- 95% polyester/5% spandex mesh inserts
- Crossover V-neck collar
- Modified racerback styling
- Flatlock stitching provides comfort and helps prevent chafing



BLACK/  
WHITE  
F254

NAVY/  
WHITE  
F252

PINK/  
WHITE  
F267



RED/  
WHITE  
F245

ROYAL/  
WHITE  
F251

WHITE/  
BLACK  
F261

LADIES SETTER SERIES  
VOLLEYBALL JERSEY

**A23000** Ladies S-2XL MSRP 22.00  
**A24000** Girls XS-XL MSRP 22.00



- 87% polyester/13% spandex flat knit
- 95% polyester/5% spandex mesh inserts
- Crossover V-neck collar
- Flatlock stitching provides comfort and helps prevent chafing
- Raglan sleeves



BLACK/  
WHITE  
F254

NAVY/  
WHITE  
F252

PINK/  
WHITE  
F267



RED/  
WHITE  
F245

ROYAL/  
WHITE  
F251

WHITE/  
BLACK  
F261



A23002

A23003



A23000

A23002



A23001

A23000

A23003

A23002



LONG, SHORT, SLEEVELESS...  
**YOU DECIDE.**



A23001

A23002

DIG,  
DIVE,  
SET,  
SERVE  
& HIT,  
**WITH  
CONFIDENCE**



LADIES SETTER SERIES  
LONG SLEEVE VOLLEYBALL JERSEY

<b>A23001</b>	Ladies	S-2XL	MSRP 24.00
<b>A24001</b>	Girls	XS-XL	MSRP 24.00



- 87% polyester/13% spandex flat knit
- 95% polyester/5% spandex mesh inserts
- Crossover V-neck collar
- Flatlock stitching provides comfort and helps prevent chafing
- Raglan sleeves



BLACK/  
WHITE  
F254

NAVY/  
WHITE  
F252

PINK/  
WHITE  
F267

RED/  
WHITE  
F245

ROYAL/  
WHITE  
F251

WHITE/  
BLACK  
F261

LADIES SETTER SERIES SHORTS

<b>A23002</b>	Ladies	S-2XL	MSRP 22.00
<b>A24002</b>	Girls	XS-XL	MSRP 22.00



- 88% polyester/12% spandex compression
- Tag-free label
- Wide flat waistband for secure fit and comfort
- No front seam
- U-shaped gusset
- Flatlock stitching provides comfort and helps prevent chafing
- 3-inch inseam
- Girls inseam graded



BLACK  
B080

NAVY  
F010

**eco REVIVE™**  
MADE FROM SUSTAINABLE MATERIALS

**ROWHOUSE FULL ZIP JACKET**

**229572** Adult S-3XL MSRP 90.00  
**229672** Youth S-XL MSRP 90.00

229572

- Eco-Revive® product featuring 100% recycled woven polyester
- Fully lined 100% polyester mesh
- Two-way front zipper with double pullers
- Back vent
- Set-in sleeves
- Front zippered welt pockets
- Striped rib-knit collar and cuffs
- Adjustable bottom hem with shockcord closure on Adult only



BLACK/WHITE 420  
COLUMBIA BLUE/WHITE 295  
DARK GREEN/WHITE 438  
GRAPHITE/WHITE R04  
KELLY/WHITE 340  
MAROON/WHITE 380



NAVY/WHITE 301  
ORANGE/WHITE 320  
PURPLE/WHITE 450  
ROYAL/WHITE 280  
SCARLET/WHITE 408

**eco REVIVE™**  
MADE FROM SUSTAINABLE MATERIALS

**ROWHOUSE PANTS**

**229573** Adult S-3XL MSRP 48.00  
**229673** Youth S-XL MSRP 48.00

229573

- Eco-Revive® product featuring 100% recycled woven polyester
- Fully lined 100% polyester mesh
- Covered elastic waistband with inside drawcord
- Side seam pockets with interior cellphone pocket
- Back zippered pocket



BLACK 080  
GRAPHITE 059  
NAVY 065





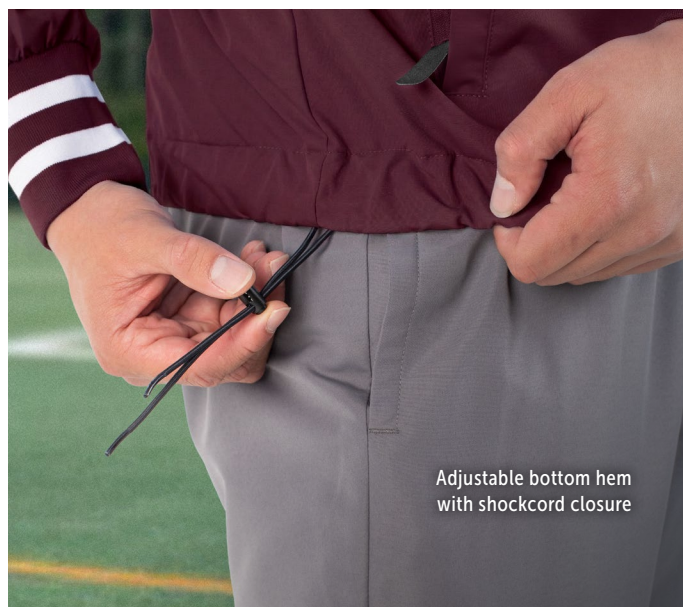
Back vent

## CLASSIC LAX STYLE.

FINISHED WITH HOLLOWAY  
DETAILS YOU EXPECT



Long zipper on  
outside lower leg



Adjustable bottom hem  
with shockcord closure



**eco**REVIVE.  
SUSTAINABLE FABRIC TECHNOLOGY

LADIES ROWHOUSE CROPPED JACKET

**229744** Ladies XS-2XL MSRP 76.00

- Eco-Revive® product featuring 100% recycled woven polyester
- Fully lined 100% polyester mesh
- 3-piece hood with drawcord
- Oversized dropped shoulder sleeves for mobility and comfort
- Front zippered welt pockets
- Elastic cuffs and bottom



BLACK/  
WHITE  
420

GRAPHITE/  
WHITE  
R04

NAVY/  
WHITE  
301

ROYAL/  
WHITE  
280

SCARLET/  
WHITE  
408



FROM THE SIDELINE  
TO MAIN STREET....



**HOLLOWAY**

229744

...ROWHOUSE DELIVERS  
**VERSATILE OUTERWEAR STYLE.**

BLACK/  
BLACK  
TONAL  
53B

DARK GREEN/  
DARK GREEN  
TONAL  
70F

MAROON/  
MAROON  
TONAL  
83C

NAVY/  
NAVY  
TONAL  
31J

ORANGE/  
ORANGE  
TONAL  
51J

PEWTER/  
CLOUD  
29F

PURPLE/  
PURPLE  
TONAL  
66C

ROYAL/  
ROYAL  
TONAL  
40K

SCARLET/  
SCARLET  
TONAL  
42F



# WORK DAY. GAME DAY. BUILT FOR BOTH.



High collar, half-zip pullover  
style zipper garage

Spandex bound  
cuffs & bottom

Side zippered  
pouch pocket



P503

223534

**ecoREVIVE**  
SUSTAINABLE FABRIC TECHNOLOGY

**CITY STRETCH HYBRID PULLOVER**

**223534** Adult S-3XL MSRP 70.00



- Eco-Revive® product featuring 78% recycled polyester/22% spandex
- Garment protects against the sun with 50+ UPF



- Eco-Revive® product featuring water repellent, 90% recycled polyester/10% spandex yoke
- Tag-free label
- High collar, half-zip pullover style zipper garage
- 3-piece hood with drawcord
- Set-in sleeves
- Side zippered pouch pocket
- Spandex bound cuffs and bottom



BLACK/  
BLACK  
TONAL  
33B

DARK GREEN/  
DARK GREEN  
TONAL  
70F

MAROON/  
MAROON  
TONAL  
83C

NAVY/  
NAVY  
TONAL  
31J

ORANGE/  
ORANGE  
TONAL  
51J

PEWTER/  
CLOUD  
29F

PURPLE/  
PURPLE  
TONAL  
66C

ROYAL/  
ROYAL  
TONAL  
40K

SCARLET/  
SCARLET  
TONAL  
42F





**ecoREVIVE™**  
MADE FROM SUSTAINABLE MATERIALS

CITY SERIES HOODIE

**223568** Adult S-3XL MSRP 53.00

223568

- 55% polyester/37% cotton/8% spandex tri-blend scuba fleece
- 2 panel hood
- Raglan sleeves
- Front pouch kangaroo pocket
- Self-fabric cuffs and bottom band



BLACK  
080

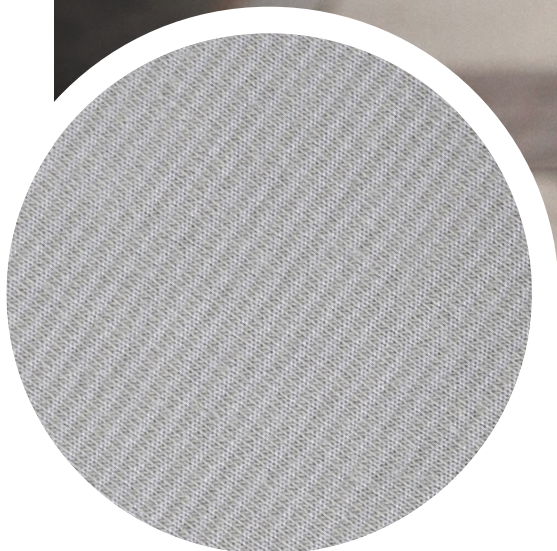
NAVY  
065

PEWTER  
52D



ROYAL  
060

SCARLET  
085



SCUBA FLEECE COMFORT.  
MODERN, SMART DESIGN.



223733

223712

# MOVEMENT. COMFORT. SUSTAINABILITY. **ALL IN ONE.**

**eco**REVIVE.  
SUSTAINABLE FABRIC TECHNOLOGY

## LADIES CITY STRETCH PULLOVER

**223733** Ladies XS-2XL MSRP 60.00



- Eco-Revive® product featuring 89% recycled polyester/11% spandex
- Tag-free label
- Half-zip pullover style
- Set-in sleeves
- Side zippered pouch pocket with hidden cell phone pocket
- Elastic cuffs
- Open bottom hem with drawcord adjustment, access located in right side of pocket
- Modest cropped length



BLACK  
080

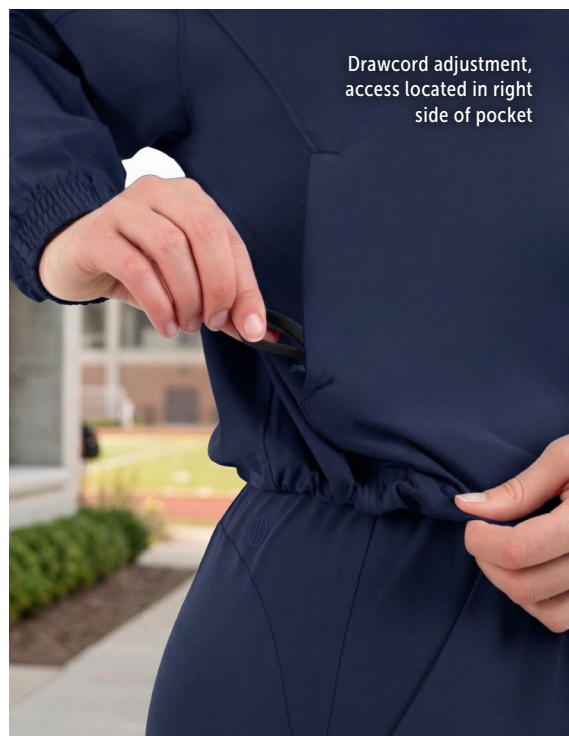
MINK  
619

NAVY  
065

PEWTER  
52D

ROYAL  
060

SCARLET  
083



Drawcord adjustment,  
access located in right  
side of pocket



Side zippered valuables pocket



**ecoREVIVE™**  
MADE FROM SUSTAINABLE MATERIALS

LADIES CITY STRETCH WOVEN SHORTS

**223712** Ladies XS-2XL MSRP 32.00



- Eco-Revive® product featuring 89% recycled polyester/11% spandex
- Tag-free label
- Wide flat covered elastic waistband with outside drawcord
- Side seam pockets with inside zippered valuables pocket on wearers left
- Water repellent



BLACK  
080



MINK  
619



NAVY  
065



PEWTER  
52D

223712



# COMFORT THAT KEEPS UP WITH THE PACE.



223736

**eco**REVIVE™  
MADE FROM SUSTAINABLE MATERIALS

LADIES CITY STRETCH PANT

**223736** Ladies XS-2XL MSRP 58.00



- Eco-Revive® product featuring 89% recycled polyester/11% spandex
- Tag-free label
- Covered elastic waistband with inside drawcord
- Front pockets
- Side seam zippered valuables pocket on wearers left
- Tapered leg 7/8" length
- Zipper on outside lower leg
- Water repellent



BLACK  
080

MINK  
619

NAVY  
065

PEWTER  
52D



BUILT FOR WHEREVER  
THE CITY TAKES YOU



**R27GKM**  
Sideline Grid  
Fleece Full-Zip  
Jacket



**R10GKM**  
Sideline  
Grid Polo



**R05JQM**  
Sideline  
Striped  
Polo



**R03GKM**  
Sideline  
Grid 1/4 Zip  
Pullover

GRID FLEECE DESIGN FOR THE GRIDIRON & BEYOND.



R27GKM



SIDELINE GRID FLEECE FULL-ZIP JACKET

**R27GKM** Adult S-5XL MSRP 70.00

- Face side, 58% polyester/36% rayon/6% spandex back side
- 96% recycled polyester/4% spandex
- High collar
- Raglan sleeves
- Front chest zippered pocket
- Front zippered welt pockets
- Elastic binding cuffs



BLACK/  
STEALTH  
AAP

NAVY/  
STEALTH  
89U

STEALTH/  
BLACK  
ANN

R27GKM



R27GKM

FROM COMPANY  
SWAG TO X'S & O'S.  
**VERSATILITY WINS**



223543



# WEAR YOUR LEGACY WITH PRIDE

**eco**REVIVE.  
SUSTAINABLE FABRIC TECHNOLOGY

ALUMNI 1/4 ZIP PULLOVER

<b>223543</b>	Adult	S-4XL	MSRP 60.00
<b>223743</b>	Ladies	XS-3XL	MSRP 60.00

- Eco-Revive® product featuring 45% recycled polyester/ 45% polyester/10% spandex super soft fleece
- Ladies' fit on style 223743
- Front pockets
- Self-fabric cuffs and bottom band



BLACK HEATHER K94	COLUMBIA BLUE HEATHER 14R	DARK GREEN HEATHER V97	MAROON HEATHER T09	NAVY HEATHER U22	ROYAL HEATHER U55	SCARLET HEATHER T20	SILVER HEATHER R12
----------------------	------------------------------	---------------------------	-----------------------	---------------------	----------------------	------------------------	-----------------------



BLACK  
HEATHER  
K94

COLUMBIA BLUE  
HEATHER  
14R

DARK GREEN  
HEATHER  
V97

MAROON  
HEATHER  
T09

NAVY  
HEATHER  
U22

ROYAL  
HEATHER  
U55

SCARLET  
HEATHER  
T20

SILVER  
HEATHER  
R12

223743



# THE VEST EVERY ALUM NEEDS.



223544



223544

**eco**REVIVE.  
SUSTAINABLE FABRIC TECHNOLOGY

## ALUMNI VEST

**223544** Adult S-4XL MSRP 50.00

- Eco-Revive® product featuring 45% recycled polyester/ 45% polyester/10% spandex super soft fleece
- High collar
- Front chest zippered pocket
- Front zippered pockets
- Elastic binding armholes



BLACK  
HEATHER  
K94

NAVY  
HEATHER  
U22

SILVER  
HEATHER  
R12



**H** HOLLOWAY

**THE ALUMNI COLLECTION.**  
THE NEW STANDARD.



**ecoREVIVE.**  
SUSTAINABLE FABRIC TECHNOLOGY

**ALUMNI POLO**

<b>223545</b>	Adult	S-4XL	MSRP 43.00
<b>223745</b>	Ladies	XS-3XL	MSRP 43.00

- Eco-Revive® product featuring 59% recycled polyester/33% polyester/8% spandex
- Ladies' fit on style 223745
- Tag-free label
- Self-fabric collar with collar stay that helps maintain collar shape wash after wash
- Box-stitched placket
- Three-button placket
- Set-in sleeves
- Side vents



BLACK HEATHER K94    COLUMBIA BLUE HEATHER 14R    DARK GREEN HEATHER V97    MAROON HEATHER T09    NAVY HEATHER U22    ROYAL HEATHER U55    SCARLET HEATHER T20    SILVER HEATHER R12

**HOLLOWAY**



BLACK  
HEATHER  
K94



COLUMBIA BLUE  
HEATHER  
14R



DARK GREEN  
HEATHER  
V97



MAROON  
HEATHER  
T09



NAVY  
HEATHER  
U22



ROYAL  
HEATHER  
U55



SCARLET  
HEATHER  
T20



SILVER  
HEATHER  
R12



THE CLASSIC POLO  
**FOR EVERY GENERATION**



# STADIUM PRINT PATTERN PLAYS EVERYWHERE



B11012



ES471

B11012



## STADIUM PRINT SHORT SLEEVE HOODED TEE

<b>B11012</b>	Adult	S-4XL	MSRP 29.00
<b>B12012</b>	Youth	S-XL	MSRP 29.00

- 100% polyester flat back mesh with tonal print
- Heat sealed label
- 3-piece hood with drawcord on Adult only
- Sport paneled shoulder for maximum movement
- Side vents



BLACK  
CAGELOCK/  
BLACK  
F827

GRAPHITE  
CAGELOCK/  
GRAPHITE  
F826

NAVY  
CAGELOCK/  
NAVY  
F830

RED  
CAGELOCK/  
RED  
F819

ROYAL  
CAGELOCK/  
ROYAL  
F811

WHITE  
CAGELOCK/  
WHITE  
F812



## STADIUM PRINT POLO

**B11011** Adult S-4XL MSRP 31.00

- 100% polyester flat back mesh with tonal print
- Heat sealed label
- Self-fabric collar with collar stay that helps maintain collar shape wash after wash
- Box-stitched placket
- Three-button placket
- Raglan sleeves
- Side vents



BLACK  
CAGELOCK  
F825

GRAPHITE  
CAGELOCK  
F818

NAVY  
CAGELOCK  
F804

RED  
CAGELOCK  
F805

ROYAL  
CAGELOCK  
F803

WHITE  
CAGELOCK  
F810

# SUBTLE, BY DESIGN.

B11011



 **HOLLOWAY**  
WEATHER SECURE

**STAY DRY**  
WHEN IT  
MATTERS  
MOST

223561



**226415**  
**226615**  
Cold Secure  
Puffer Jacket



**226410**  
**226610**  
Cold Secure  
Long Puffer  
Jacket



**226420**  
**226620**  
Cold Secure  
Puffer Vest



**223560**  
Weather  
Secure  
Parka



**223562**  
Rain Secure  
Waterproof  
Shell



**223563**  
Rain Secure  
Waterproof  
Pant

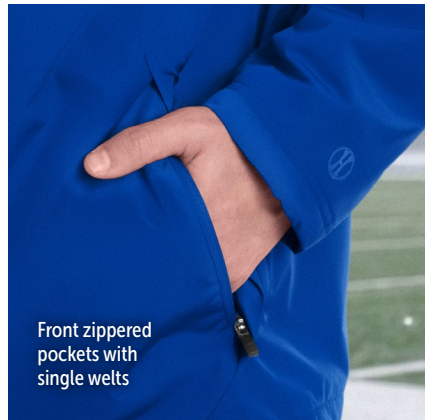


**223561**  
**223661**  
Cold Secure  
Jacket



**NEW YOUTH SIZING**

223661



Front zippered pockets with single welts



High collar with full front zipper and storm flap with zipper garage

**WATERPROOF**

**COLD SECURE JACKET**

<b>223561</b>	Adult	XS-4XL	MSRP 104.10
<b>223661</b>	Youth	M-L	MSRP 104.10

- 100% recycled polyester
- Shell fabric features 5,000MM fabric waterproof rating 3,000G/M2 fabric breathability rating
- 100% polyester lining
- 100% polyester fleece lining
- Hanger loop label
- High collar with full front zipper and storm flap with zipper garage
- 3-piece hood with inside adjustable shockcord closure
- Interior all access decoration zipper
- Set-in sleeves
- Front zippered pockets with single welts
- Inside pocket
- Half-elastic cuffs
- Open bottom with drawcord

BUILT TO  
STAY WARM.  
**NOW IN YOUTH.**



BLACK 080    BLACK/WHITE 420    CARBON 396    DARK GREEN/WHITE 438    MAROON/WHITE 380    NAVY 065    NAVY/WHITE 301    ROYAL/WHITE 280    SCARLET/WHITE 408



LIGHTWEIGHT.  
LOW-PROFILE.  
ELEVATED.



Hook-and-loop adjustable with comfort stretch

RIPSTOP PERFORATED  
ADJUSTABLE CAP

**P450** Adult  
One Size MSRP 14.00

- Poly/spandex blend perforated ripstop fabric
- Tricot mesh interfaced side and back panels
- Comfort sweatband
- Low-profile, structured crown
- Slight curved visor
- Pro-stitched finish



BLACK  
080

MINK  
619

NAVY  
065

PETAL  
PINK  
052

POWDER  
BLUE  
37M

RETRO  
GREEN  
10N

WHITE  
005



Malleable  
snapback closure

WEEKENDER UNSTRUCTURED  
SNAPBACK CAP

**P414** Adult  
One Size MSRP 13.50

- Poly/spandex blend
- Comfort sweatband
- Low-profile, unstructured crown
- Slight curved visor
- Contrast sandwich visor
- Welded eyelets on side panels



BLACK/  
WHITE  
420



DARK GREEN/  
WHITE  
438



MINK/  
WHITE  
64V



NAVY/  
WHITE  
301



PINK LEMONADE/  
WHITE  
27B



WHITE/  
SILVER  
E64





Pony tail opening with crisscross elastic band detailing



Flexible TPE snackbar closure

### LADIES WEEKENDER PONYTAIL CAP

**P415** Adult  
One Size MSRP 16.00

- Poly/spandex blend
- Comfort sweatband
- Curved visor
- Welded eyelets on side panels
- Pony tail opening with crisscross elastic band detailing



BLACK 080



DARK GREEN 035



MINK 619



NAVY 065



PINK LEMONADE 04Y



RETRO GREEN 10N



TRANQUIL BLUE 24B



WHITE 005



SPORT PRO VISOR

**P503** Adult  
One Size MSRP 12.50

Hook-and-loop adjustable  
with comfort stretch

- Poly/spandex blend
- Comfort sweatband
- 6CM crown
- Curved visor



GAME READY.  
SUN READY.  
**YOUR NEW  
GO-TO VISOR.**





**CUSTOM**  
SUBLIMATION

POWERED BY



**ELITE LEVEL  
UNIFORM  
DESIGN  
STARTS  
HERE**



AS5100  
BROOKLYN

AS5101  
BROOKLYN



AS5100  
BROOKLYN

AS5101  
BROOKLYN



AS5100  
BROOKLYN

AS5101  
BROOKLYN

# FULLY REVERSIBLE

## CHROMAGEAR CLUTCH REVERSIBLE BASKETBALL JERSEY

<b>AS51008</b>	<b>fabric 8</b>	Adult	S-3XL	MSRP 74.00
<b>AS5100S</b>	<b>fabric S</b>	Adult	S-3XL	MSRP 74.00
<b>AS52008</b>	<b>fabric 8</b>	Youth	XS-XL	MSRP 74.00
<b>AS5200S</b>	<b>fabric S</b>	Youth	XS-XL	MSRP 74.00

- Outside locker label
- Scoop neck
- Each layer hemmed separately for easy embellishment

## CHROMAGEAR CLUTCH REVERSIBLE BASKETBALL SHORTS

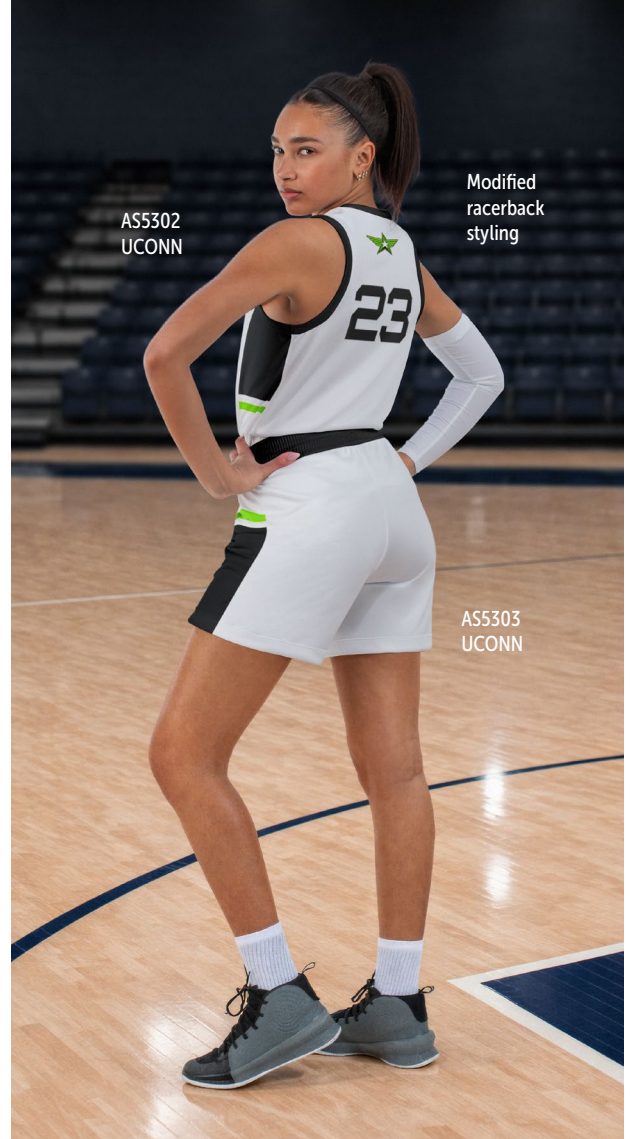
<b>AS51018</b>	<b>fabric 8</b>	Adult	S-3XL	MSRP 74.00
<b>AS5101S</b>	<b>fabric S</b>	Adult	S-3XL	MSRP 74.00
<b>AS52018</b>	<b>fabric 8</b>	Youth	XS-XL	MSRP 74.00
<b>AS5201S</b>	<b>fabric S</b>	Youth	XS-XL	MSRP 74.00

- Covered elastic waistband with drawcord
- 7-inch inseam
- Youth inseam graded
- Angled side vents



AS5302  
UCONN

AS5303  
UCONN



AS5302  
UCONN

Modified  
racerback  
styling

AS5303  
UCONN

FULLY  
**REVERSIBLE**

LADIES CHROMAGEAR CLUTCH  
REVERSIBLE BASKETBALL JERSEY

<b>AS53028</b>	<b>fabric 8</b>	Ladies	S-3XL	MSRP 74.00
<b>AS5302S</b>	<b>fabric S</b>	Ladies	S-3XL	MSRP 74.00
<b>AS54028</b>	<b>fabric 8</b>	Girls	XS-XL	MSRP 74.00
<b>AS5402S</b>	<b>fabric S</b>	Girls	XS-XL	MSRP 74.00

- Outside locker label
- Scoop neck
- Each layer hemmed separately for easy embellishment

LADIES CHROMAGEAR CLUTCH  
REVERSIBLE BASKETBALL SHORTS

<b>AS53038</b>	<b>fabric 8</b>	Ladies	S-3XL	MSRP 74.00
<b>AS5303S</b>	<b>fabric S</b>	Ladies	S-3XL	MSRP 74.00
<b>AS54038</b>	<b>fabric 8</b>	Girls	XS-XL	MSRP 74.00
<b>AS5403S</b>	<b>fabric S</b>	Girls	XS-XL	MSRP 74.00

- Covered elastic waistband with outside drawcord
- 6-inch inseam
- Angled side vents



**CUSTOM**  
SUBLIMATION

FLEXIBILITY  
TO **DESIGN**  
**YOUR WAY.**



AS5302  
UCONN

AS5303  
UCONN



AS5102  
BIG M

AS5103  
BIG M

#### CHROMAGEAR CLUTCH BASKETBALL JERSEY

<b>AS51028</b>	<b>fabric 8</b>	Adult	S-3XL	MSRP 54.00
<b>AS5102S</b>	<b>fabric S</b>	Adult	S-3XL	MSRP 54.00
<b>AS52028</b>	<b>fabric 8</b>	Youth	XS-XL	MSRP 54.00
<b>AS5202S</b>	<b>fabric S</b>	Youth	XS-XL	MSRP 54.00
<b>AS53008</b>	<b>fabric 8</b>	Ladies	S-3XL	MSRP 54.00
<b>AS5300S</b>	<b>fabric S</b>	Ladies	S-3XL	MSRP 54.00
<b>AS54008</b>	<b>fabric 8</b>	Girls	XS-XL	MSRP 54.00
<b>AS5400S</b>	<b>fabric S</b>	Girls	XS-XL	MSRP 54.00

- Ladies' fit on style AS5300
- Outside locker label
- Scoop neck

#### CHROMAGEAR CLUTCH BASKETBALL SHORTS

<b>AS51038</b>	<b>fabric 8</b>	Adult	S-3XL	MSRP 54.00
<b>AS5103S</b>	<b>fabric S</b>	Adult	S-3XL	MSRP 54.00
<b>AS52038</b>	<b>fabric 8</b>	Youth	XS-XL	MSRP 54.00
<b>AS5203S</b>	<b>fabric S</b>	Youth	XS-XL	MSRP 54.00
<b>AS53018</b>	<b>fabric 8</b>	Ladies	S-3XL	MSRP 54.00
<b>AS5301S</b>	<b>fabric S</b>	Ladies	S-3XL	MSRP 54.00
<b>AS54018</b>	<b>fabric 8</b>	Girls	XS-XL	MSRP 54.00
<b>AS5401S</b>	<b>fabric S</b>	Girls	XS-XL	MSRP 54.00

- Ladies' fit on style AS5301
- Fully custom covered elastic waistband with waistband panel
- 7-inch inseam on Adult
- Youth inseam graded
- 6-inch inseam on Ladies
- Angled side vents





228194  
ALOHA



228194  
DRIFTER



228194  
DRIFTER



FREESTYLE SUBLIMATED  
CAMP SHIRT

<b>228194</b>	Adult	S-4XL	MSRP 80.00
<b>228294</b>	Youth	XS-XL	MSRP 80.00



- 5.6 ounce 95% polyester/5% spandex wicking knit
- Garment protects against the sun with UPF 30+
- Tag-free label
- Self-fabric collar with collar stay that helps maintain collar shape wash after wash
- 7-clear button placket
- Set-in sleeves
- Side vents

NEW LAID-BACK LOOKS  
BUILT TO BRAND.






228146  
STRIATION



FREESTYLE SUBLIMATED POLO

<b>228146</b>	Adult	S-4XL	MSRP 69.80
<b>228346</b>	Ladies	XS-3XL	MSRP 69.80

-  • Dry-Excel™ 100% polyester smooth wicking knit
- Garment protects against the sun with 50+ UPF
- Ladies' fit on style 228346
- Tag-free label
-  • Self-fabric collar with collar stay that helps maintain collar shape wash after wash
- Three-button placket
-  • Set-in sleeves

# MODERN DESIGNS FOR **WORK & PLAY**

Visit [momentecbrands.com](https://www.momentecbrands.com) for full list of FreeStyle design concepts



627K

228140  
REJOICE

FREESTYLE SUBLIMATED FLEECE CREW

**228140** Adult S-4XL MSRP 77.00

**228240** Youth S-XL MSRP 77.00

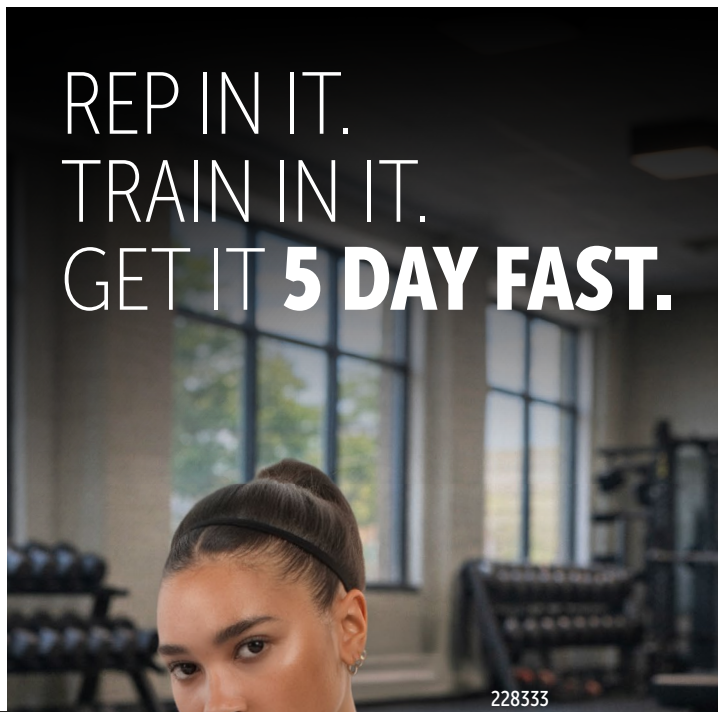


- 5.9 ounce, 100% polyester performance wicking fleece with brushed back for added warmth
- Tag-free label
- Set-in sleeves
- Self-fabric cuffs and bottom band





228333  
GAMEDAY



228333  
DISRUPTER

LADIES FREESTYLE SUBLIMATED  
5 DAY TURBO CREW NECK TEE

<b>228333</b>	Ladies	XS-4XL	MSRP 36.00
<b>228433</b>	Girls	XS-XL	MSRP 36.00



- 100% polyester interlock
- Garment protects against the sun with 50+ UPF
- Tag-free label
- Set-in sleeves

# FABRIC TYPES

## BEST



- 87% polyester/13% spandex flat knit front
- 95% polyester 5% spandex pin dot mesh back

<b>Abrasian Resistance</b>	1	2	3	4	5
<b>Stretch</b>	1	2	3	4	5
<b>Breathability</b>	1	2	3	4	5
<b>Vibrancy</b>	1	2	3	4	5
<b>Soft Hand</b>	1	2	3	4	5

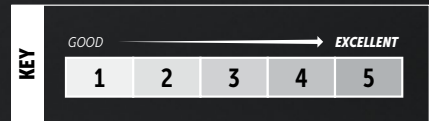
## BEST



- 100% polyester air mesh

<b>Abrasian Resistance</b>	1	2	3	4	5
<b>Stretch</b>	1	2	3	4	5
<b>Breathability</b>	1	2	3	4	5
<b>Vibrancy</b>	1	2	3	4	5
<b>Soft Hand</b>	1	2	3	4	5

For more Chromagear product information and to order garment samples, please visit us online or ask your local Sales Representative.



# ICONS

**Coloright™**  
Coloright™ technology helps prevent dye migration

**Moisture Management**  
Fabric wicks moisture away keeping the body cool & dry

**4-Way Stretch**  
Stretch properties allow for increased mobility

**Water Resistant**  
Resists rain & water to keep the body protected & dry

**Dry-Excel™**  
Moisture evaporation and wicking fabric

**Odor Resistant**  
Odor Resistant technology keeps garments fresher longer

**UPF**  
Garment protects against harmful UV rays

# DECORATION APPAREL

Our apparel decoration services offer endless ways to customize our massive assortment of in-stock styles. Choose from traditional screen print, direct-to-film, embroidery and tackle twill options or take your styles to the next level with custom braiding and decorative stitching options.



**SCREEN PRINT**  
SILICONE & PLASTISOL OPTIONS



**DIRECT TO FILM**



**DURATEK NAME & NUMBER**  
PREMIUM SCREEN PRINT TRANSFER



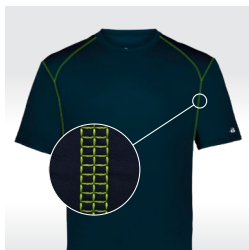
**EMBROIDERY**



**TACKLE TWILL**



**CUSTOM BRAID & SOUTACHE**



**DECORATIVE STITCHING**

\*For more details, check out the  
**APPAREL DECORATION GUIDE**



# DECORATION HEADWEAR

Customize our in-stock headwear with speed and ease. Our headwear decoration services let you add your logo using pre-set placements and trusted techniques including embroidery, heat transfer, and patches. With quick turnarounds and low minimums, we deliver a timeless custom look designed to stand out.



**DIRECT TO FILM**



**FLAT EMBROIDERY**



**3D EMBROIDERY**



**3D EMBROIDERED PUFF PATCH**



**GENUINE LEATHER PATCH**



**FAUX LEATHER PATCH**



**EMBROIDERED PATCH**



**WOVEN PATCH**



**SUBLIMATED PATCH**



**SILICONE PATCH**

\*For more details, check out the  
**CUSTOM HEADWEAR GUIDE**



**FLEXSTYLE® PATCH**



**PRIVATE LABEL**



**CLIP TAGS**



**STOCK PATCHES**



Momentec Brands  
P.O. Box 14939  
Augusta, GA 30919-0939

PRSR STD  
U.S. POSTAGE PAID  
PERMIT NO. 665  
AUGUSTA, GA 30901



[momentecbrands.com](http://momentecbrands.com)