



416600 WOMEN'S B-CORERACERBACKTANK

- A-line body
- Racerback w/ room to print
- 100% polyester moisture management/antimicrobial performance fabric
- Badger heat seal logo on center back
- Double-needle hem

COLORS

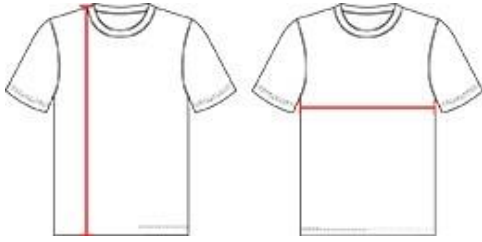


SPECIFICATIONS

| | XS | S | M | L | XL | 2XL |
|---|------|------|------|------|------|------|
| Piece Weight measured in pounds | 0.36 | 0.36 | 0.36 | 0.36 | 0.36 | 0.36 |
| Spec Body Length measured in inches | 24 | 25 | 26 | 27 | 28 | 29 |
| Spec Chest Width measured in inches | 14 ½ | 16 | 17 ½ | 19 | 20 ½ | 22 |
| Case Count # of units per case | 36 | 36 | 36 | 36 | 36 | 36 |

HOWTOMEASURE

These product specifications reference a product's measurements.
For sizing information and guidance, please reference our sizing charts.



BODY LENGTH

Measured on the front from the shoulder/neck intersection to the bottom of the garment.

CHEST WIDTH

Measured across the chest, 1" below the armhole seam.