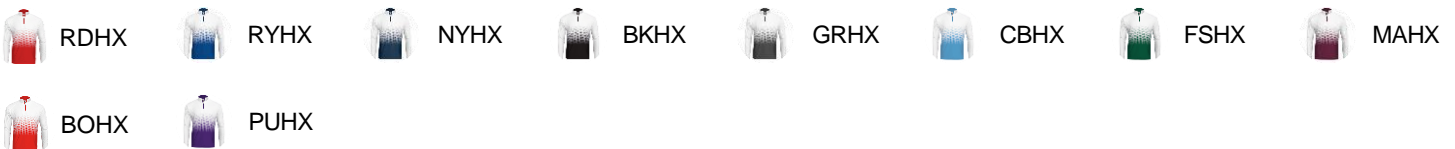




# # 422200 MEN'S HEX2.01/4ZIP

- 100% Polyester moisture management/antimicrobial performance fabric
- Sublimated front and back body
- Self-fabric collar with 8" locking zipper
- Contrast inner collar and zipper
- Badger sport shoulder for maximum movement
- Double-needle hem
- Badger heat seal logo on left sleeve

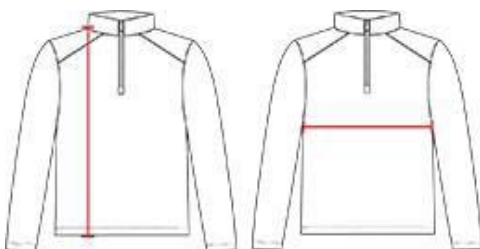
## COLORS



## SPECIFICATIONS

	XS	S	M	L	XL	2XL	3XL	4XL
<b>Piece Weight</b> measured in pounds	0.00	0.00	0.00	0.00	0.00	0.00	0.00	0.00
<b>Spec Body Length</b> measured in inches	26	27	28	29	30	31	32	33
<b>Spec Chest Width</b> measured in inches	18	19	21	23	25	27	29	31
<b>Case Count</b> # of units per case	36	36	36	36	36	36	24	24

## HOWTOMEASURE



These product specifications reference a product's measurements.  
For sizing information and guidance, please reference our sizing charts.

### BODYLENGTH

Measured on the front from the shoulder/neck intersection to the bottom of the garment.

### CHESTWIDTH

Measured across the chest, 1" below the armhole seam.