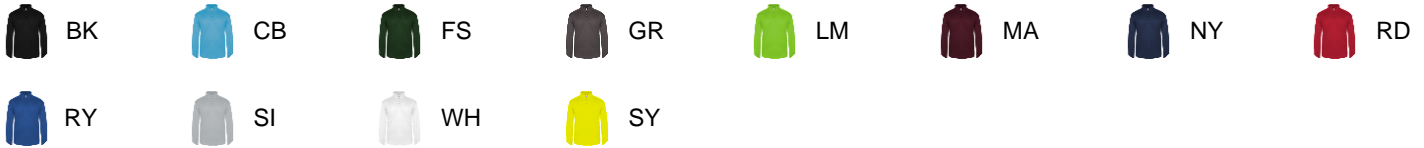




# # 428000 MEN'S 1/4 ZIP LIGHTWEIGHT PULLOVER

- Badger Sport paneled shoulder for maximum movement
- Paneled sleeve
- 94% Polyester / 6% Spandex moisture management/antimicrobial performance fabric
- Embroidered badger logo on left sleeve
- Self-fabric collar with 8" locking zipper

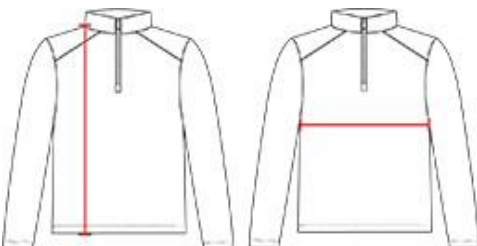
## COLORS



## SPECIFICATIONS

	XS	S	M	L	XL	2XL	3XL	4XL
<b>Piece Weight</b> measured in pounds	0.36	0.36	0.36	0.36	0.36	0.36	0.36	0.36
<b>Spec Body Length</b> measured in inches	26	27	28	29	30	31	32	33
<b>Spec Chest Width</b> measured in inches	16	17	19	21	23	25	27	29
<b>Case Count</b> # of units per case	36	36	36	36	36	36	24	24

## HOW TO MEASURE



These product specifications reference a product's measurements.  
For sizing information and guidance, please reference our sizing charts.

### BODY LENGTH

Measured on the front from the shoulder/neck intersection to the bottom of the garment.

### CHEST WIDTH

Measured across the chest, 1" below the armhole seam.