



4 6 6 6 0 0 WOMEN'S PRO-COMPRESSIOWOMEN'S RACERBACK

- Racerback with room to print
- Stretch body mt
- Double-needle hem
- Badger heat seal logo on back
- Self-fabric binding neck and armhole
- 90% Polyester/10% Spandex moisture management fabric

COLORS



BK



GR



NY



RD

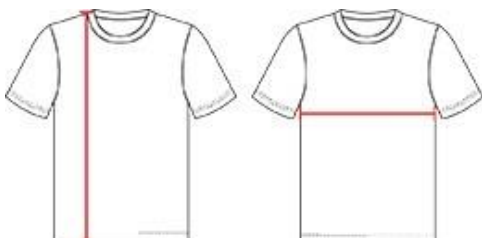


RY

SPECIFICATIONS

	XS	S	M	L	XL	2XL
Piece Weight measured in pounds	0.36	0.36	0.36	0.36	0.36	0.36
Spec Body Length measured in inches	22	23	24	25	26	27
Spec Chest Width measured in inches	13 ½	14 ½	15 ½	16 ½	17 ½	18 ½
Case Count # of units per case	36	36	36	36	36	36

HOW TO MEASURE



These product specifications reference a product's measurements.
For sizing information and guidance, please reference our sizing charts.

BODY LENGTH

Measured on the front from the shoulder/neck intersection to the bottom of the garment.

CHEST WIDTH

Measured across the chest, 1" below the armhole seam.