



# # 496700 WOMEN'S TRI-BLEND WOMEN'S FANTEE

- 65% Polyester/ 25% Mercerized Cotton/ 10% Rayon moisture management/antimicrobial performance fabric
- Badger sport shoulder for maximum movement
- Contrast striping on sleeve
- Double-needle hem
- Badger heat seal logo on left sleeve

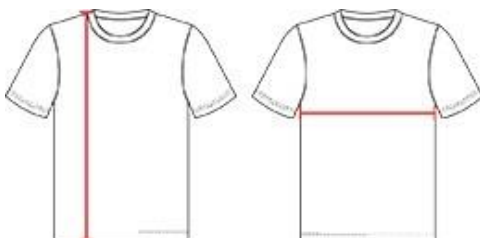
## COLORS



## SPECIFICATIONS

	XS	S	M	L	XL	2XL
<b>Piece Weight</b> measured in pounds	0.00	0.00	0.00	0.00	0.00	0.00
<b>Spec Body Length</b> measured in inches	24	25	26	27	28	29
<b>Spec Chest Width</b> measured in inches	16	17 ½	19	21	23	25
<b>Case Count</b> # of units per case	36	36	36	36	36	36

## HOW TO MEASURE



These product specifications reference a product's measurements.  
For sizing information and guidance, please reference our sizing charts.

### BODY LENGTH

Measured on the front from the shoulder/neck intersection to the bottom of the garment.

### CHEST WIDTH

Measured across the chest, 1" below the armhole seam.